

Module, Coupler/Splitter [or Value Added (EG VAM)]

PART NO: PX-D08XX6-YYYY-ZZ (See Notes: 1 & 2)

Use / Application



F. 1

This Coupler/Splitter Module or Value Added Module (i.e. VAM) is provided with 2 cylindrical; coupler/splitters, that enables an optical transmission signal stream to be split up into two separate signal streams. Each lead of a coupler/splitter is fitted with an optical connector, which connects at the rear of a small patch panel. Coupler/Splitters of various split ratios can be provided eg 50/50, 90/10 etc. At the sloping down front of the patch panel, connections to transmission equipment is made using separate patchcords. The sloping down front of the patch panel is an **operational health & safety feature**, as it minimises the chance of eye contact being accidentally made with a live optical signal stream, and allows better optical fibre cord flow. The minimum radius of the optical cord leads in the module is maintained at 30mm.

Features

A modular item, of an expandable system, using mounting subrack/chassis, that holds up to 12 VAM modules. The mounting subrack/chassis is available separately.

Provided with a sloping down front patch panel. This is an **operational health & safety feature**, as it minimises the chance of eye contact being accidentally made with a live optical signal stream, and allows better optical fibre cord flow.

Fitted with coupler/splitter holder, which holds up to 2 couplers.

Fitted with a 6 position patch panel for popular connectors, eg FC, SC, ST, etc

Accepts typically 6 through-connectors, eg FC, SC, ST, etc; which are supplied.

Supplied with quality cylindrical style couplers/splitters eg 50/50, 90/10, etc

Can be mounted either vertically or horizontally.

Purchase as a unit.



F. 2

Technical Specifications

| | |
|------------|----------------------------------|
| Dimensions | 28mm (W) x 227mm (H) x 133mm (D) |
| Weight | 770 grams. |
| Material | Mild steel |
| Color | White Birch (Powder coat finish) |

Note 1:

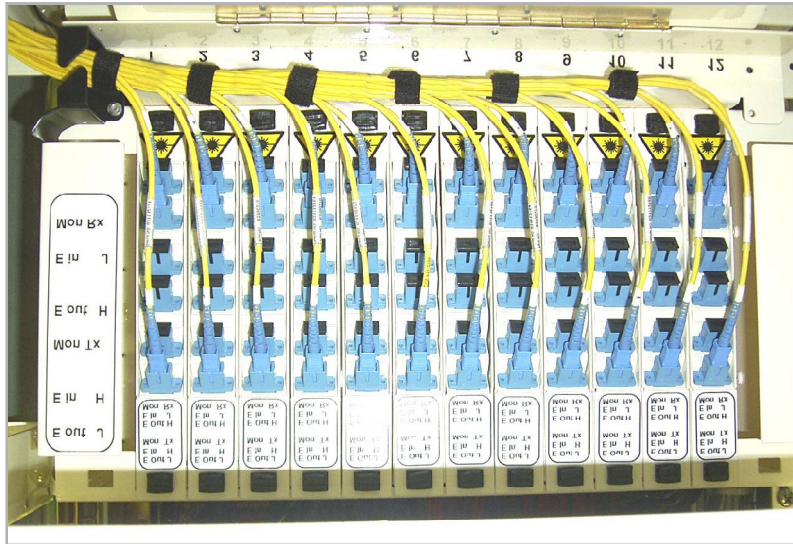
Add connector type (i.e. XX) to complete Part No eg FC, SC or ST, etc

Note 2:

Add Coupler/Splitter split ratio (i.e. YYYY) to complete Part No eg 5050 , 9010 or 9505, etc

ZZ: Single Mode (SM) or Multi Mode (MM)

Photonix Installation Standards for Fibre Cabling (VAM)



Use of Velcro ties ensure minimum bend radius of fibre is not breached



Correct cabling ensures a neat and tidy appearance and better performance

